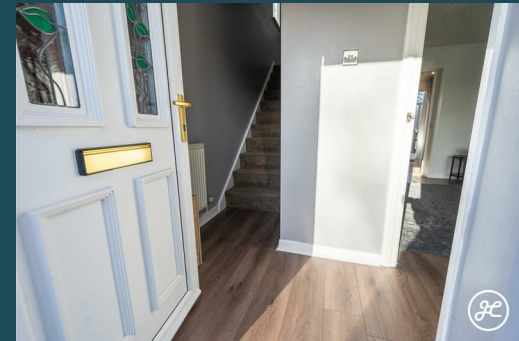


Severn Close  
Bridgwater  
TA6 4EX



  
**JOSEPH CASSON**  
the estate agency your home deserves









£255,000



Discover this delightful three-bedroom semi-detached home, boasting a spacious rear garden. With the added convenience of a garage and driveway, this home is located in a highly desirable area on Bridgwater's eastern side.

## ACCOMMODATION

This double glazed, gas centrally heated accommodation briefly comprises: entrance hallway, lounge, kitchen/diner and conservatory to the ground floor. With three bedrooms and bathroom on the first floor. Externally, there is a driveway and garage, and an attractive, rear garden of generous proportions.

## LOCATION

East Bower is a popular development on the Eastern edge of Bridgwater and has a range of local facilities including: Tesco express, Bower Inn and Bridgwater Hospital. The development also offers excellent access to Bridgwater town centre, A39 and M5.

Bridgwater offers a wide range of amenities and has excellent transport links to the M5 motorway and mainline rail link. A short distance to the West is the Quantock Hills, an Area of Outstanding Natural Beauty.

## ADDITIONAL INFORMATION

Tenure: Freehold

Estate/Management Charge: None

EPC Rating:

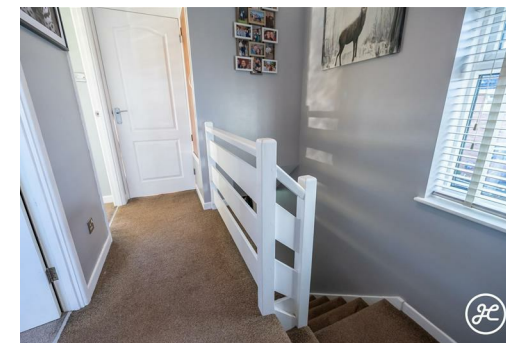
Council Tax Band: B

## UTILITIES

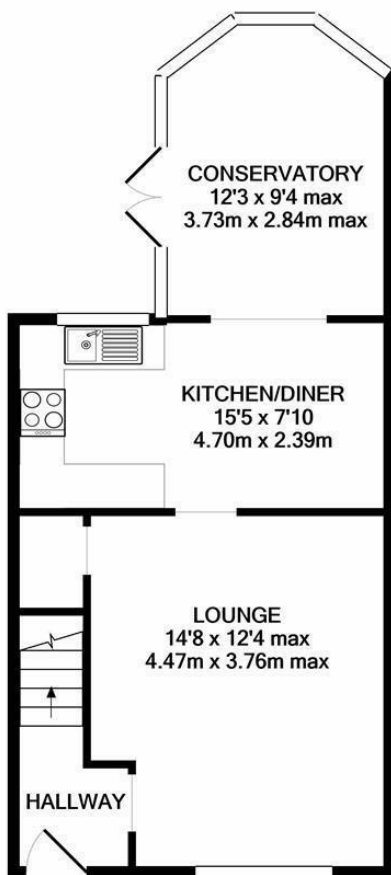
Water supply: Mains

Sewerage: Mains

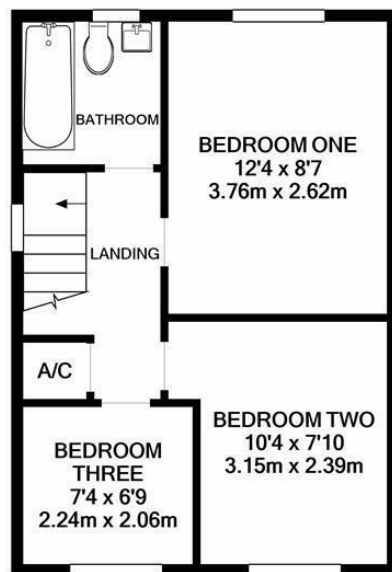
Electricity Supply: Mains







GROUND FLOOR



1ST FLOOR

Whilst every attempt has been made to ensure the accuracy of the floor plan contained here, measurements of doors, windows, rooms and any other items are approximate and no responsibility is taken for any error, omission, or mis-statement. This plan is for illustrative purposes only and should be used as such by any prospective purchaser. The services, systems and appliances shown have not been tested and no guarantee as to their operability or efficiency can be given  
Made with Metropix ©2020

Mains Gas Supply: Yes  
Central Heating: Yes - Gas

## FLOODING

No Flooding in the last 5 years. Flood Information: [flood-map-for-planning.service.gov.uk/location](https://flood-map-for-planning.service.gov.uk/location)

## BROADBAND & MOBILE COVERAGE

For an indication of specific speeds and supply or coverage in the area, we recommend that potential buyers use the Ofcom checkers below:

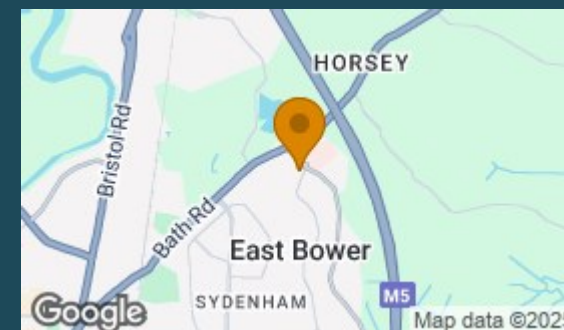
[checker.ofcom.org.uk/en-gb/mobile-coverage](https://checker.ofcom.org.uk/en-gb/mobile-coverage)

[checker.ofcom.org.uk/en-gb/broadband-coverage](https://checker.ofcom.org.uk/en-gb/broadband-coverage)

## Council Tax Band

B

Energy Efficiency Rating		
	Current	Potential
Very energy efficient - lower running costs		
(92 plus) <b>A</b>		
(81-91) <b>B</b>		
(69-80) <b>C</b>		
(55-68) <b>D</b>		
(39-54) <b>E</b>		
(21-38) <b>F</b>		
(1-20) <b>G</b>		
Not energy efficient - higher running costs		
England & Wales		
EU Directive 2002/91/EC		



**Agents Note:** Whilst every care has been taken to prepare these particulars, they are for guidance purposes only. All measurements are approximate and are for general guidance purposes only and whilst every care has been taken to ensure their accuracy, they should not be relied upon and potential buyers/tenants are advised to recheck the measurements



Joseph Casson Estate Agency -  
Bridgwater  
1 Friarn Lawn  
Bridgwater  
Somerset  
TA6 3LL



Contact  
01278258005  
[office@josephcasson.co.uk](mailto:office@josephcasson.co.uk)  
[www.josephcasson.co.uk](http://www.josephcasson.co.uk)



**JOSEPH CASSON**  
the estate agency your home deserves